

# Chimeric HLA-A\*02:01 ( $\alpha 3$ ) &B2M&WT-1 (RMFPNAPYL) Monomer Protein



Cat. No. MHC-HM414

## Description

<b>Source</b>	Recombinant Chimeric HLA-A*02:01( $\alpha 3$ )&B2M&WT-1 (RMFPNAPYL) Monomer Protein is expressed from HEK293 with His tag and Avi tag at the C-Terminus. It contains Gly25-Thr206(Human HLA-A*02:01 $\alpha 1$ & $\alpha 2$ )&Asp207-Glu299(Mouse H-2Ld $\alpha 3$ ), Ile21-Met119 (B2M) and RMFPNAPYL peptide.
<b>Accession</b>	A0A140T913(Human HLA-A*02:01 $\alpha 1$ & $\alpha 2$ )&P01897(Mouse H-2Ld $\alpha 3$ )&P61769(B2M)&RMFPNAPYL
<b>Molecular Weight</b>	The protein has a predicted MW of 50.5 kDa. Due to glycosylation, the protein migrates to 51-60 kDa based on Bis-Tris PAGE result.
<b>Endotoxin</b>	Less than 1EU per ug by the LAL method.
<b>Purity</b>	> 95% as determined by Bis-Tris PAGE > 95% as determined by HPLC

## Formulation and Storage

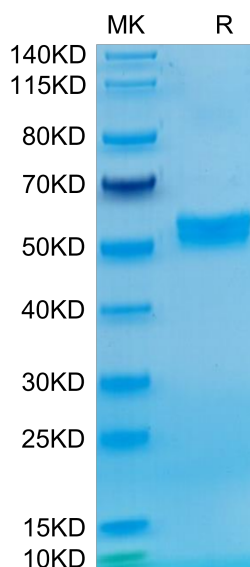
<b>Formulation</b>	Lyophilized from 0.22 $\mu$ m filtered solution in PBS (pH 7.4). Normally 8% trehalose is added as protectant before lyophilization.
<b>Reconstitution</b>	Centrifuge the tube before opening. Reconstituting to a concentration more than 100 $\mu$ g/ml is recommended. Dissolve the lyophilized protein in distilled water.
<b>Storage</b>	-20 to -80°C for 12 months as supplied from date of receipt. -80°C for 3 months after reconstitution. Recommend to aliquot the protein into smaller quantities for optimal storage. Please minimize freeze-thaw cycles.

## Background

The WT1 protein plays a role in cell growth, the process by which cells mature to perform specific functions (differentiation), and the self-destruction of cells (apoptosis). WT1 is differentially expressed in serous, endometrioid, clear cell, and mucinous carcinomas of the peritoneum, fallopian tube, ovary, and endometrium. The Human HLA-A\*0201 WT-1 (RMFPNAPYL) complex Protein is a complex of HLA-A\*0201 of the MHC Class I, B2M and RMFPNAPYL peptide of the WT-1.

## Assay Data

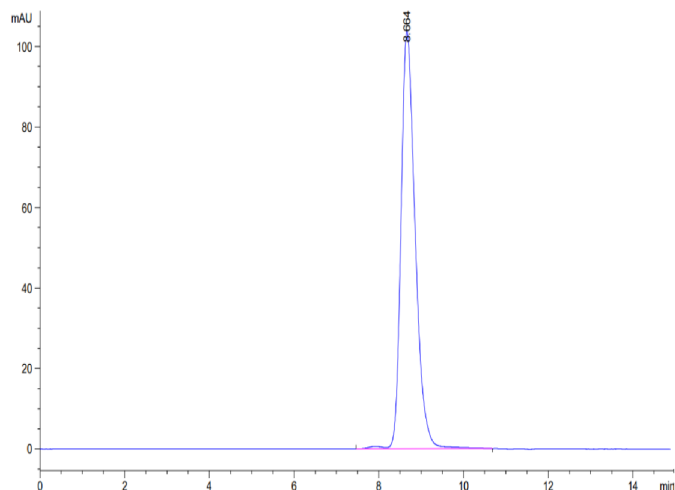
### Bis-Tris PAGE



Chimeric HLA-A\*02:01 ( $\alpha 3$ ) &B2M&WT-1 (RMFPNAPYL) Monomer on Bis-Tris PAGE under reduced condition. The purity is greater than 95%.

### SEC-HPLC

**Assay Data**

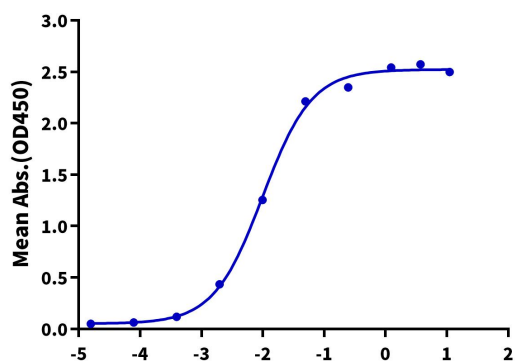


The purity of Chimeric HLA-A\*02:01 ( $\alpha 3$ ) & B2M&WT-1 (RMFPNAPYL) Monomer is greater than 95% as determined by SEC-HPLC.

**ELISA Data**

**Human&Mouse Chimeric HLA-A\*02:01&B2M&WT-1, His Tag ELISA**

0.5 $\mu$ g Human&Mouse Chimeric HLA-A\*02:01&B2M&WT-1, His Tag Per Well



Immobilized Chimeric HLA-A\*02:01 ( $\alpha 3$ ) & B2M&WT-1 (RMFPNAPYL) Monomer, His Tag at 5 $\mu$ g/ml (100 $\mu$ l/well) on the plate. Dose response curve for Anti-HLA-A\*02:01&B2M&WT-1 (RMFPNAPYL) Antibody, hFc Tag with the EC50 of 9.9ng/ml determined by ELISA.

Log Anti-HLA-A\*02:01&B2M&WT-1 Antibody, hFc Tag Conc.( $\mu$ g/ml)